


FACT SHEET



WEATHER

 SPRING	▲ 20°C ▼ 15°C
 SUMMER	▲ 28°C ▼ 18°C
 AUTUMN	▲ 17°C ▼ 12°C
 WINTER	▲ 15°C ▼ 9°C

LOCATION

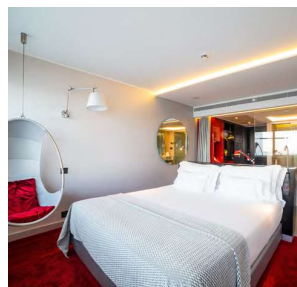
The uniqueness of its location makes Myriad by SANA Hotels a majestic hotel: overlooking the Tagus River in the eastern part of Lisbon, the building, over 140 meters high, is a glimpse of the future. Located by an important business centre and close to the main access routes to Lisbon, the hotel appears as a futuristic oasis with several recreational areas always complemented by the view of the Tagus. A building of remarkable architecture next to one of Lisbon's most emblematic modern landmarks: the Vasco da Gama Tower, a legacy of the 1998 World Exhibition.

SERVICES AND FACILITIES:

Room Service - 24/7 | Multilingual Staff | Free Wi-Fi | Laundry / Dry Cleaning | Valet Parking | Parking | Currency exchange service | Car Rental (on request) | Babysitting (on request) | Medical Care 24 (on request) | Fitness Centre | Indoor Swimming Pool

NEARBY

Near the Airport
Atlantic Pavilion
FIL
Pavilion of Knowledge
Leisure area by the Tagus River
Vasco da Gama Bridge
Lisbon Casino
Main points of access:
IC17 CRIL
A1 North
A12 South
A8 West



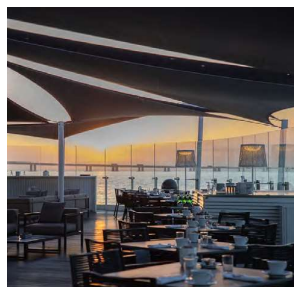
BEDROOM & SUITES

The 186 bedrooms and suites feature a contemporary decoration, strong and contrasting shades and a magnificent view of the Tagus estuary.

150 Deluxe Rooms | 26 Premium Rooms | 9 Suites | 1 Presidential Suite

Amenities / Facilities

Interconnecting rooms | Double Rooms with whirlpool bath | Twin Rooms with shower with water jets | Multimedia connection for MP3 Player | Free Wireless Internet



BARS & RESTAURANTS

On the ground floor you will find the restaurant/main bar – River Lounge.

It serves lunch and dinner with extended opening hours and an extensive range of drinks and snacks. There is also an outside deck directly overlooking the River Tagus.

FIFTY SECONDS is the most recent and ambitious project of the SANA group. A luxury restaurant that will offer you a unique gastronomic experience, at 120 meters high, led by the famous Basque Chef Martin Berasategui (12 Michelin stars). Fifty seconds full of refinement and flavour, that will stay in your memory forever.

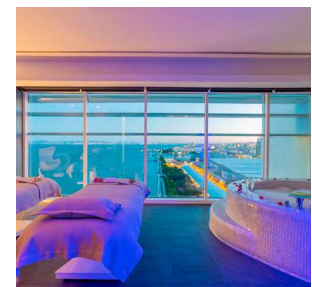


MEETING ROOMS

The MYRIAD by SANA Hotels has 3 events/meeting rooms measuring 350m2 with natural light on the first floor of the hotel.

With access by a footbridge from the hotel, the MYRIAD Crystal Center is an excellent alternative for large-scale events.

Comprising 10 rooms spread over 2 floors measuring 1,500m2, the MYRIAD CRYSTAL CENTER offers customers 7 exemplary rooms on the ground floor measuring 800m2, an outside deck area and 3 boardrooms measuring 43m2 each, all fitted with the latest audio-visual equipment and natural light.



SAYANNA WELLNESS & SPA

2 massage rooms

1 beauty treatment room

Sauna; Steam Room; Flotarium

Hamman shower

VIP SPA Suite for two people.